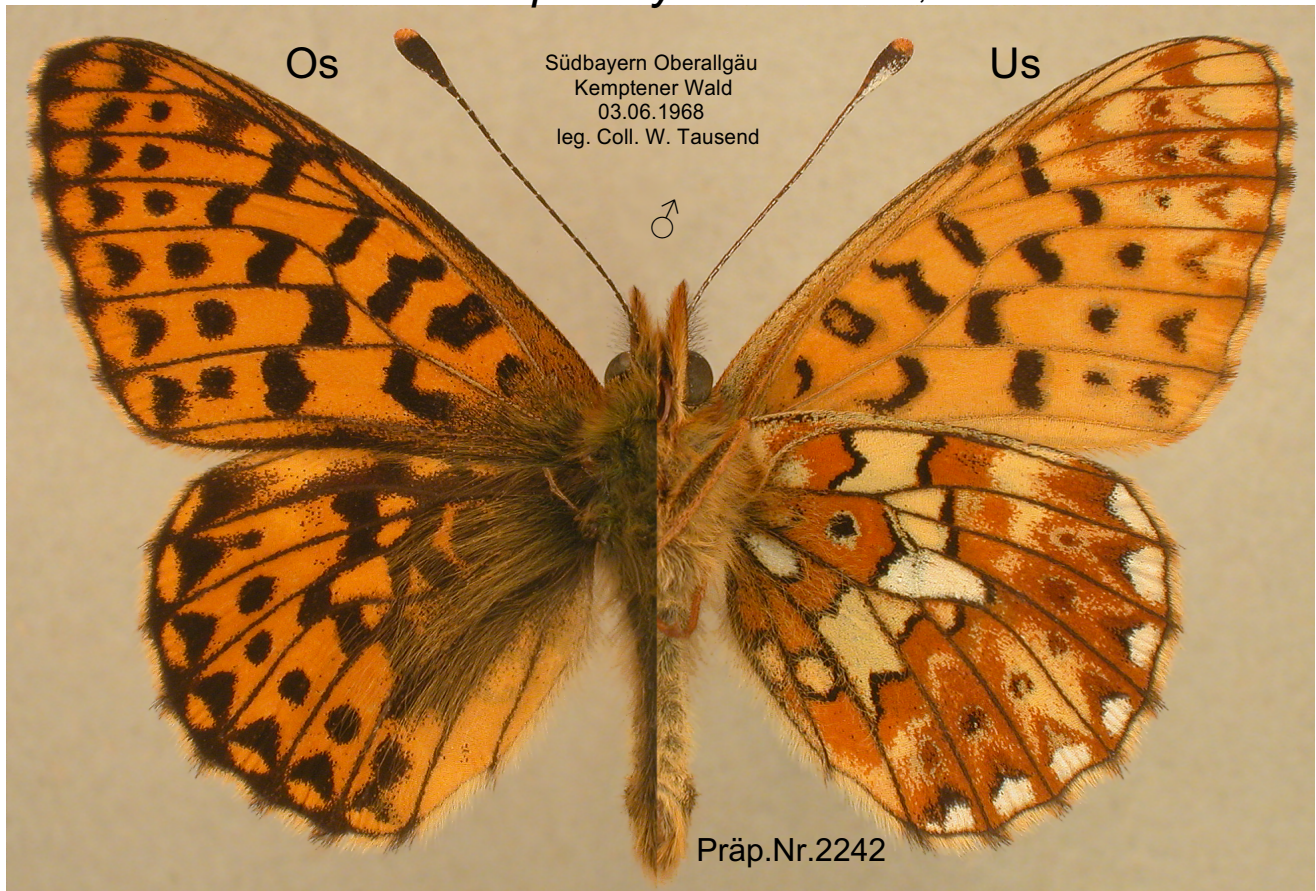
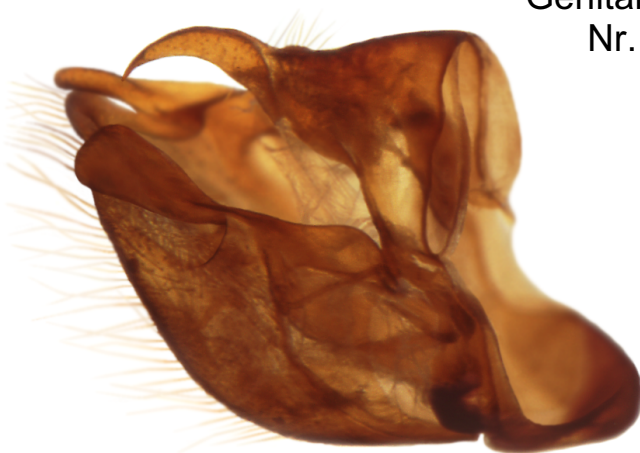


Lepidoptera Nymphalidae
Clossiana euphrosyne LINNAEUS, 1758



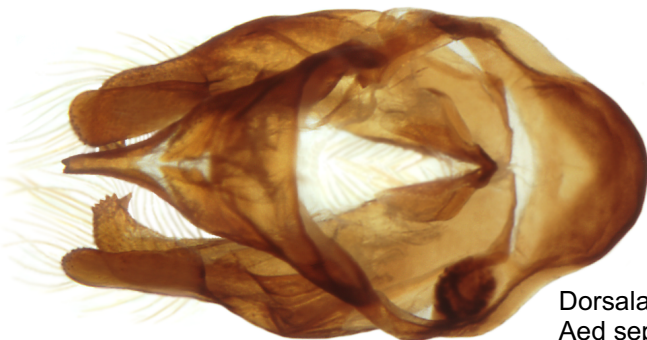
Genitalpräparat
Nr. 2242



Lateralansicht anatomisch rechts Aed sep



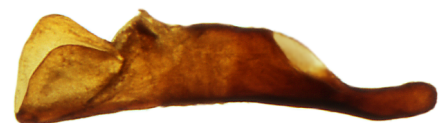
Ventralansicht Aed sep



Dorsalansicht
Aed sep



anatomisch rechte Valve Innen



Aedoeagus Lateralansicht